



**ARTIFICIAL
INTELLIGENCE**

**MEETS SAFETY AND
HEALTH AT WORK**

Realizing the promise of exoskeletons

Research efforts to increase the efficacy and acceptance through Artificial Intelligence-enabled wearable robots.

Dr. Joseph McIntyre, Ph.D.
Tecnalia Research and Innovation



MEMBER OF BASQUE RESEARCH
& TECHNOLOGY ALLIANCE

With a multi-sectoral and multi-
technological perspective, we listen and
work with companies to respond to the
major global challenges.

In this way, we are able to generate profit
for companies and create value for society.

EUROSHNET 20/10/2022



Personalized Health @ Tecnalia



We foster the development of customised products and services in prevention, diagnosis, prognosis, treatment and rehabilitation phases, through an integrated approach that includes genetics, nutrition and physical and social environments, as the main variables that affect people's health.

tecnalia

MEMBER OF BASQUE RESEARCH
& TECHNOLOGY ALLIANCE

What can we do for you?

- Food ingredients and functional compounds
- Healthy foods
- In vitro diagnosis
- Regenerative medicine
- Neuroengineering
- Biomedical product
- Medical robotics
- Digital health and medical imaging
- Pharmaceutical development
- Health and safety *wearable* devices
- Healthy urban solutions





Why exoskeletons?

Injury and ill-health resulting from manual handling activities incur significant costs:

- 20% of all non-fatal workplace injuries are attributable to manual handling injuries
- One-third of musculoskeletal disorder injuries are also caused through manual handling activities.
- **About a fourth of European workers suffer from back pain, which tops the list of all reported work-related disorders.**





Exoskeletons: The Dream



Stronger!



Exoskeletons:

The Dream



EUROSHNET 2010/2022

More Agile!



Exoskeletons: The Dream

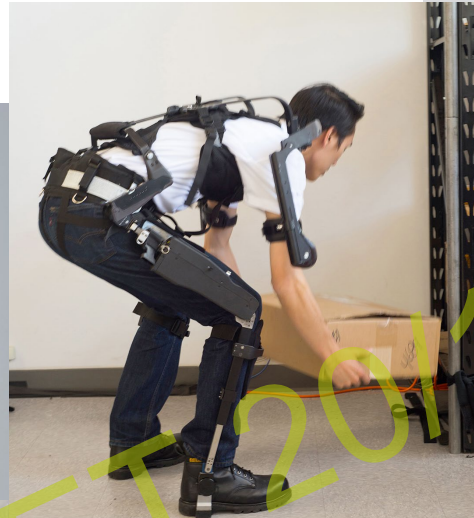


Who knows ?!?!



Exoskeletons: The Reality

Passive Devices to Transfer Loads





The Goal



Courtesy of Ana Elvira Planas Lara, NISSAN

“En cuanto decido moverme, el exoesqueleto responde, me levanta los brazos y los sostiene mientras realizo la operación, sin ningún esfuerzo...”

“As soon as I decide to move, the exoskeleton responds, raising my arms and supporting them while I perform the operation, without any effort”

“Este exoesqueleto es mi segunda piel ...”

“This exoskeleton is my second skin ...”

“Ojalá lo hubiera tenido antes ...”

“I wish I had it sooner ...”



The Goal



“Uff... me roza en el brazo ...”

“Uff ... It rubs against my arm ...”

“Me impide alcanzar las piezas...”

“It prevents me from reaching the pieces ...”

“Cuanto más lo uso, más me canso...”

¡¡ por favor quitádmelo ya !!”

“The more I wear it, the more tired I become ...

Please, take it off me!”

Courtesy of Ana Elvira Planas Lara, NISSAN



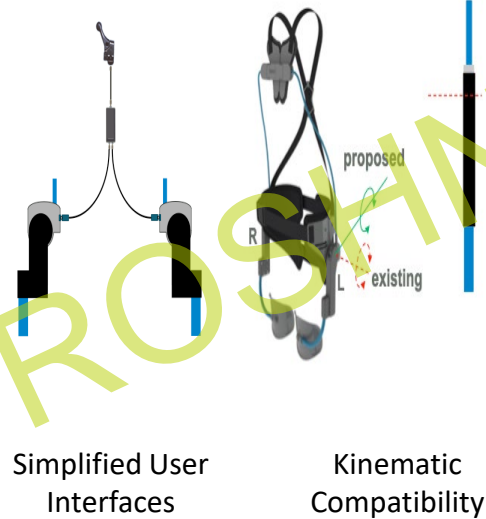
Toward better acceptance of exoskeletons

Simple
Mechanical
Solutions

Intelligent
Mechatronic
Design



- Passive, but Intelligent
- AI-enabled User Interactions
- “Like a second skin”

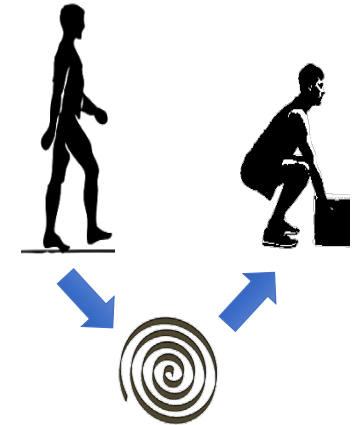


Usability



Intention
Detection/Selection

Acceptability



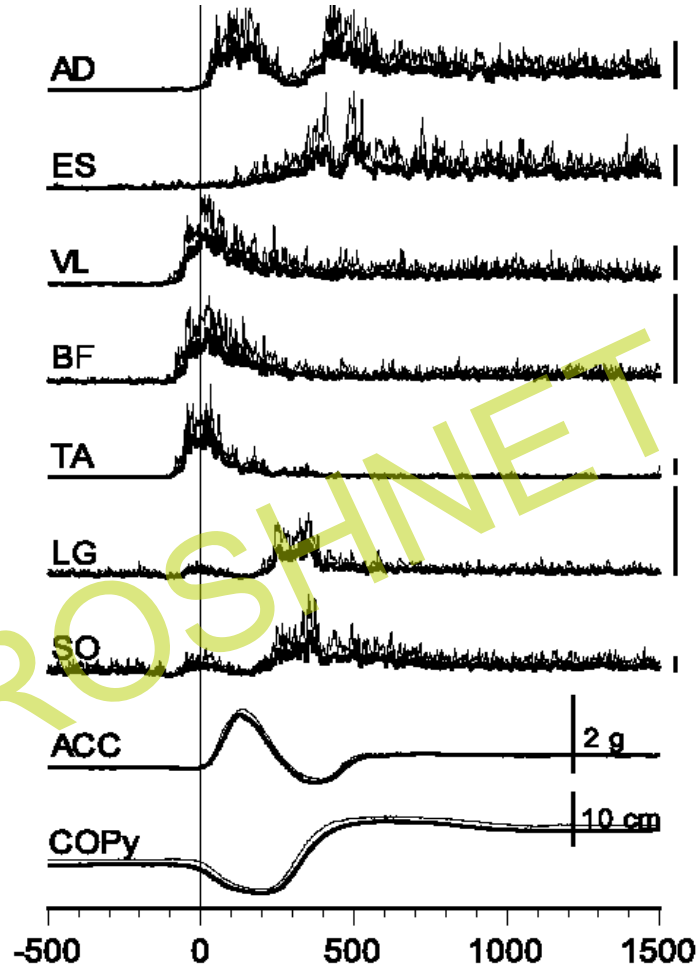
Energy Storage
and Release

Efficacy



Intention Detection

- Anticipate the needs of the user (AI)
- Activate mechanisms “as needed”
- “Get out of the way” when not needed.



- Activity in leg and trunk muscles begins prior to targeted lifting of the arm.
- Amplitude of EMG activity depends on length of reaching movement.
- *Intention Detection* may be achieved prior to movement onset by observing anticipatory responses in postural muscles as well as in prime movers.



Energy Storage and Release

- Store energy during “regular” activities
- Release energy when needed
- AI to anticipate when to store and when to release

Non-linear linkages open the possibility to modulate the apparent resistance to an otherwise passive element.

- Elliptical chain rings for bicycles represent a common example for optimizing exchange of power.
- Self-winding watches allow storage of energy with minimal impediment to movement.

➤ *Can clever mechanical designs optimize assistance for targeted motions while increasing transparency for auxiliary motions?*





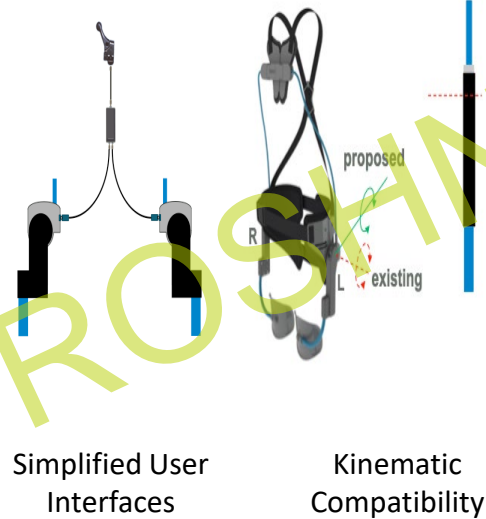
Toward better acceptance of exoskeletons

Simple
Mechanical
Solutions

Intelligent
Mechatronic
Design



- Passive, but Intelligent
- AI-enabled User Interactions
- “Like a second skin”

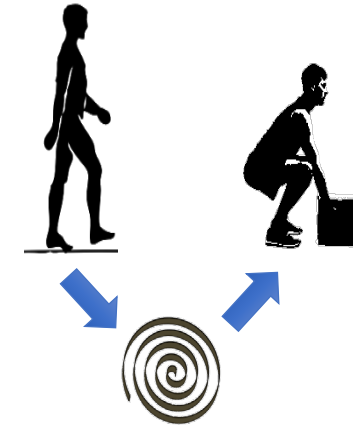


Usability



Intention
Detection/Selection

Acceptability



Energy Storage
and Release

Efficacy



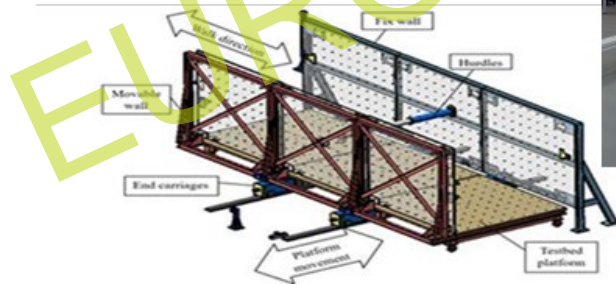
Lowering barriers to exoskeleton uptake



InteX

20/10/2022

Expert Services to predict Return on Investment





Lowering barriers to exoskeleton uptake



How to go from measurements to results?

Researchers

- Time to Complete Tasks
- Muscle Activity
- Exerted Forces
- Limb Kinematics
- Balance Indicators
- Precision
- Accuracy



Decision Makers

- Are my workers safer?
 - lower risk of injury
 - greater longevity
- Are my workers “happier”?
 - increased comfort
 - less fatigue
- Are my workers more efficient?
 - shorter execution times
 - fewer workers for the same task





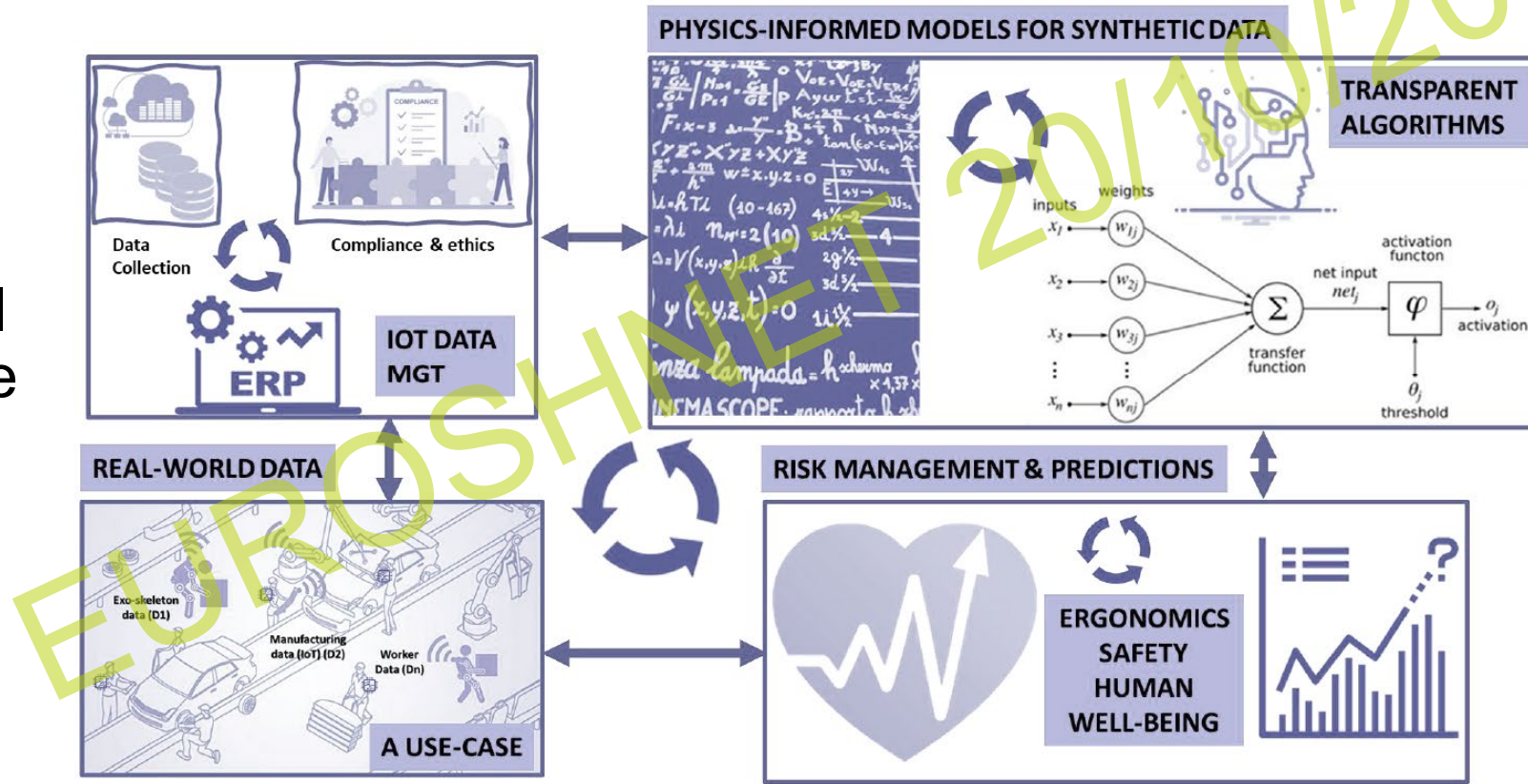
Lowering barriers to exoskeleton uptake



How to go from measurements to predictions?



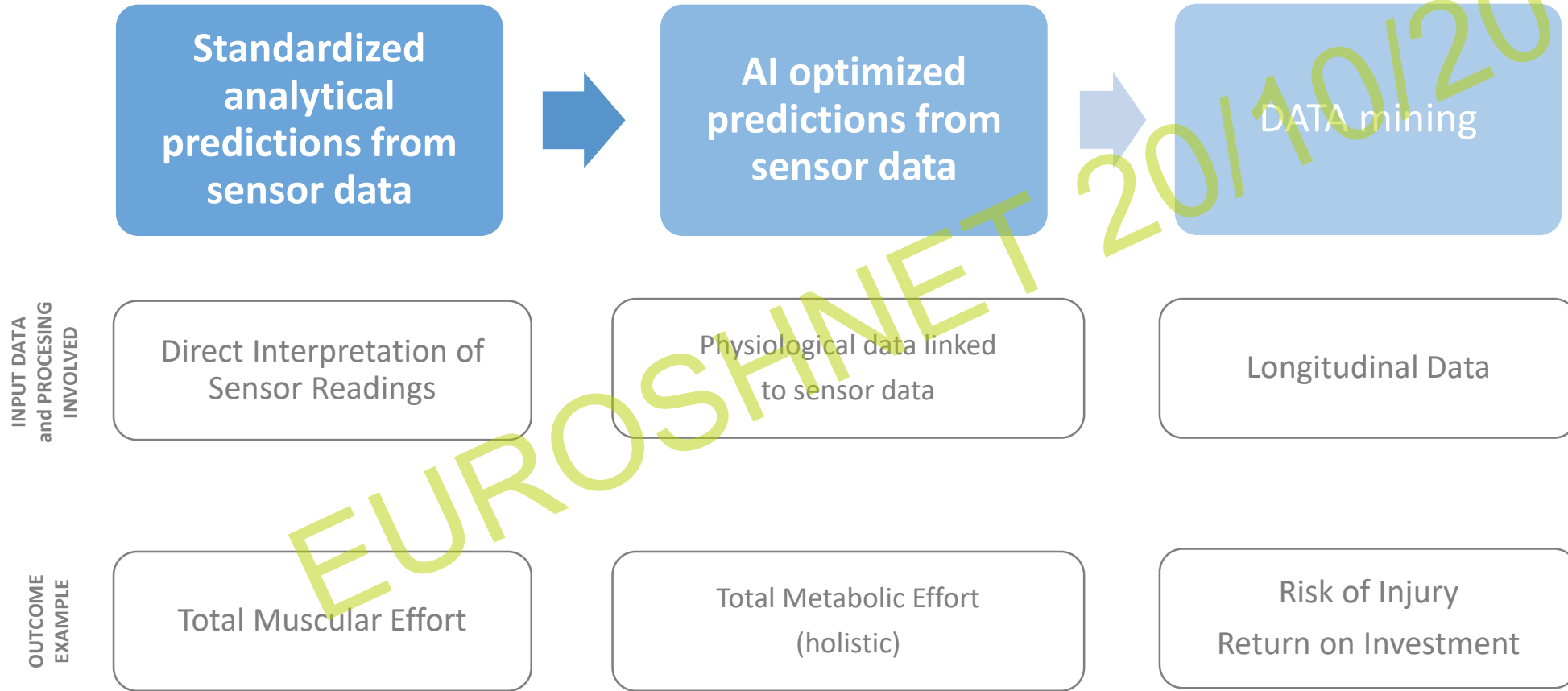
Physics-Informed AI for outcome predictions



Courtesy of: Courtesy of CTAG



InteX Performance Predictors



EUROSHNET 20/10/2022



Realizing the Promise of Exoskeletons

- Potential for exoskeletons as an effective tool for worker health
- Barriers to Uptake of Exos in the Workplace
 - Lack of Acceptance by Users
 - Unproven Efficacy
 - Uncertainty of Return on Investment
- AI approaches to overcome the barriers
 - Better Acceptance through Intelligent Transparency
 - Decreased Uncertainty through AI-enabled Performance Predictors